

INTRODUCING: FOLLETT LIGHTBOX

Creekside High School Media has purchased several titles in Lightbox.

Follow the instructions to see all of the possibilities Lightbox may have for your classroom.

CLICK ON "DESTINY" AND SELECT CREEKSIDE HIGH SCHOOL



CREEKSIDE HIGH SCHOOL VIRTUAL LIBRARY GATEWAY

[LIBRARY HOME](#) [ONLINE DATABASES](#) [STUDENT RESOURCES](#) [TEACHER RESOURCES](#) [SUBJECT GUIDES](#) [CHS HOME](#)

WELCOME TO THE CHS MEDIA CENTER WEB PAGE

Posted on [August 24, 2015](#) by [Laura Strickland](#)

Media Center Hours – 8:00 am – 4:15 pm

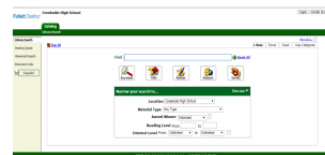
(Students need their school I.D. to check out books/computers/etc)



CLICK HERE [Florida Teens Read 2017-2018](#) FOR THE LIST OF THE 2016-2017 NOMINATED BOOKS.

Destiny Catalog (CHS online catalog)

[Click on Destiny Catalog](#) to and select Creekside High School, to search what is available at CHS library.



Search Library Pages

Library News and Events

- WELCOME TO THE CHS MEDIA CENTER WEB PAGE
- CHS Media Center Reservations Online
- Media Service District Website

Library Pages

- Access Online Databases
- ACT / SAT Online Practice / Plato Learning Environment
- Careers
- Citation Sources
- Civil Rights / Black History Month
- Copyright, Fair Use and TEACH Act Guidelines
- Edmodo
- Fitzgerald and the 1920s
- Instructional Tools
- Library Home
- Media Center News/Schedule
 - CHS Media Center Newsletter
 - Media Center Schedule
- Online Textbooks
- Permission Slips
- Persuasive Writing
- Presidents of the United States
- Reference Databases
- Student Resources
- Subject Guides
- Teacher Resources
- TeachingBooks

SEARCH FOR "LIGHTBOX"

Follett Destiny® Creekside High School

Log In Create Account

Catalog

Library Search

Library Search

Destiny Quest

Destiny Discover

Resource Lists

Español

How do I... ?

Basic Power Visual Copy Categories

My Searches

Find Lightbox Reset All

Keyword Title Author Subject Series

Narrow your search to... Show Less ▲

Location Creekside High School

Material Type Any Type

Award Winner Unlimited ?

Reading Level From to

Interest Level From Unlimited to Unlimited ?

©2002-2016 Follett School Solutions, Inc. 14_0_0_AU2 5/31/2017 3:15 PM EDT

THE LIST OF LIGHTBOX TITLES CHS PURCHASED ARE LISTED

Follett Destiny[®] Creekside High School Log In [Create Account](#)

Catalog

Library Search > Search Results

Library Search How do I... ?

Destiny Quest Titles One Search

Destiny Discover




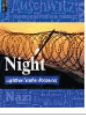

Resource Lists

Spanish

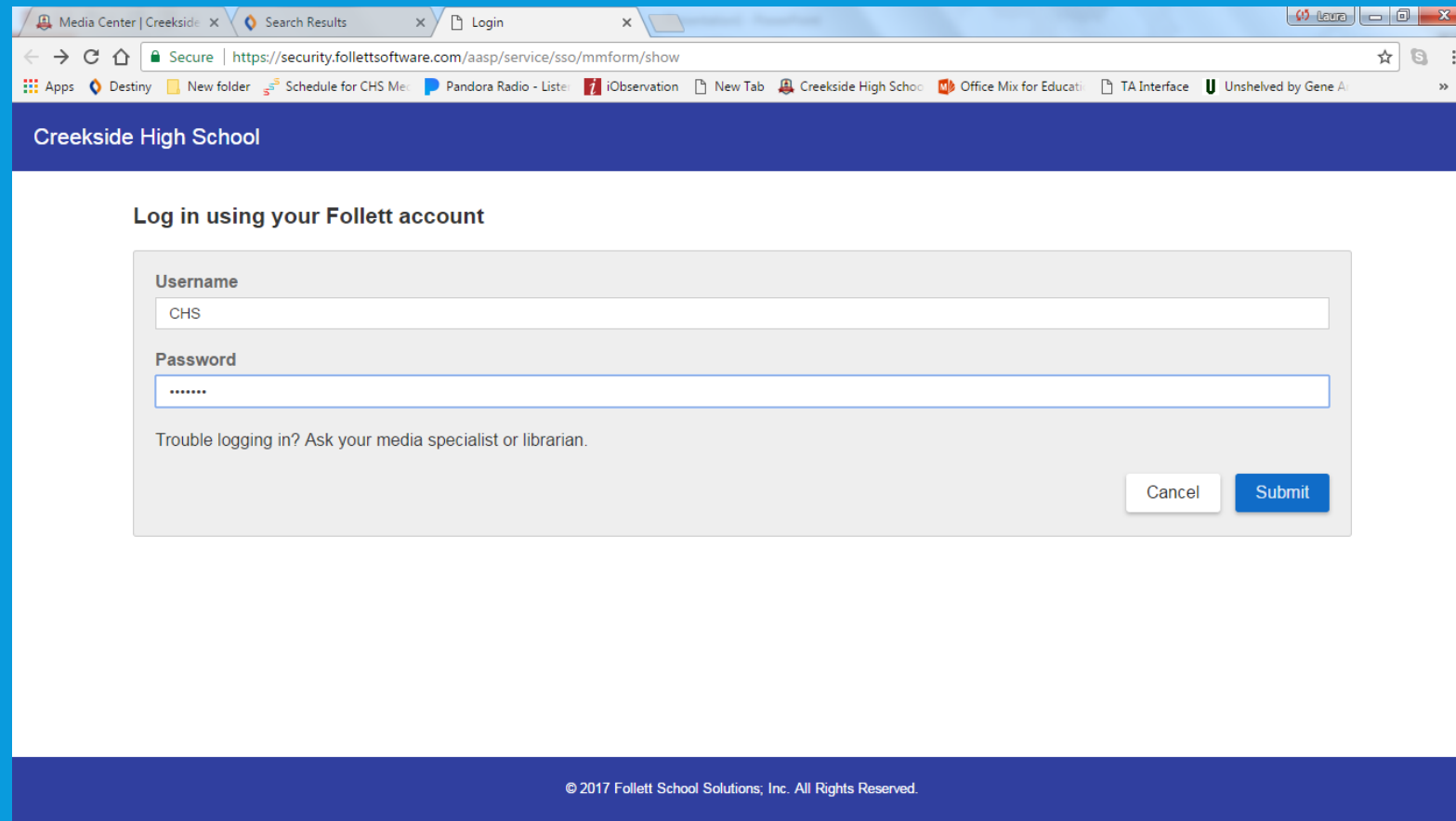
Searched for (Lightbox). Searched in: Creekside High School. Printable

[Not what you're looking for? Refine your search? Browse Subjects?] Selected List: My List Add Page

Titles: 1 - 6 of 6 Sort By Relevance

	Animal Farm Details Open Call #: 823/.912 Wiseman, Blaine. Series: Lightbox Published 2017 Interest Level: Professional Add to This List
	The Great Gatsby Details Open Call #: 813/.52 Whelan, Piper. Series: Lightbox Published 2017 Interest Level: Professional Add to This List
	Macbeth Details Open Call #: 822.3/3 Whelan, Piper. Series: Lightbox Published 2017 Interest Level: Professional Add to This List
	Night Details Open Call #: 843/.914 Whelan, Piper. Series: Lightbox Published 2017 Interest Level: Professional Add to This List
	Nineteen eighty-four Details Open Call #: 823/.912 Wiseman, Blaine. Series: Lightbox Published 2017 Interest Level: Professional Add to This List
	To kill a mockingbird Details Open Call #: 813/.54 Whelan, Piper. Series: Lightbox Published 2017 Interest Level: Professional Add to This List

CLICK ON "OPEN" TEACHERS & STUDENTS MAY LOG IN TO A "GUEST" ACCOUNT IF THEIR DISTRICT USERNAME AND PASSWORD DOESN'T WORK



Media Center | Creekside x Search Results x Login x

Secure | <https://security.follettsoftware.com/aasp/service/sso/mmform/show>

Apps | Destiny | New folder | Schedule for CHS Me | Pandora Radio - Liste | iObservation | New Tab | Creekside High Schoo | Office Mix for Educati | TA Interface | Unshelved by Gene A

Creekside High School

Log in using your Follett account

Username

Password

Trouble logging in? Ask your media specialist or librarian.

Cancel Submit

© 2017 Follett School Solutions; Inc. All Rights Reserved.

GUEST ACCOUNT
Username: CHS
Password: knights

SELECT "OPEN LIGHTBOX"



EXPLORE ALL OF THE FEATURES AVAILABLE IN LIGHTBOX

LIGHTBOX The Great Gatsby Menu

The interface displays a grid of 23 numbered content cards, each representing a different feature or resource available in the Lightbox. The cards are arranged in three rows:

- Row 1: Card 2 (Overview), Card 3 (Navigation), Card 4 (F. Scott Fitzgerald), Card 5 (F. Scott Fitzgerald), Card 6 (The Setting of the Novel), Card 7 (The Setting of the Novel)
- Row 2: Card 8 (Time Period of the Novel), Card 9 (Time Period of the Novel), Card 10 (Conflict in the Novel), Card 11 (Conflict in the Novel), Card 12 (Introducing the Characters), Card 13 (Introducing the Characters), Card 14 (The Art of Storytelling), Card 15 (The Art of Storytelling)
- Row 3: Card 16 (Theme in the Novel), Card 17 (Theme in the Novel), Card 18 (Symbolism in the Novel), Card 19 (Symbolism in the Novel), Card 20 (The Use of Language), Card 21 (The Use of Language), Card 22 (Impact of the Novel at the Time of Publication), Card 23 (Impact of the Novel at the Time of Publication)

Lightbox Standard Features

- Audio
- Video
- First Hand
- Docs
- Activity
- Weblink
- Slideshow
- Transparency
- Google Maps
- More
- Quiz
- Key Words

Lightbox Supplementary Resources

- Activity Pack
- Curriculum
- Streaming Media
- Destiny
- Vocabulary

2 Lightbox Literature Studies Copyright ©2017 Smartbook Media Inc. All rights reserved. Terms and Conditions | Copyright & Acknowledgement The Great Gatsby 3